

Cartridge Specifications

Media : Polyethylene and Polypropylene

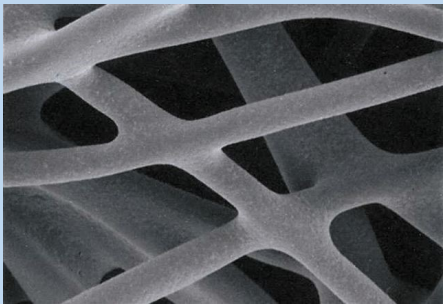
Filtration rate

Nominal : 5, 10, 25, 50, 75, 100, 150, 185 micron

Dimension

For JM Housing:
ID x OD x Length
10mm x 20mm x 74 mm

For M20 Housing :
ID x OD x Length
8mm x 11mm x 17mm



mini FILTER Cartridges

Self-Bonding Binder-Free mini Cartridge Filter for Point-of-Use Filter System

For spray guns, stainless mesh filters are usually used. However, mesh filters do not trap gel particles. The JNC mini-FILTER is a small type of CP-FILTER that effectively removes gel contamination using bi-component technology & depth structure. mini-FILTER can be placed just before the spray gun and works as a gatekeeper in the paint process

Features

Structure

Only polyolefin thermally bonded bi-component fibers are used for Mini-FILTER Cartridge, and the fiber-to-fiber bond forms a stable porosity.

Advantages

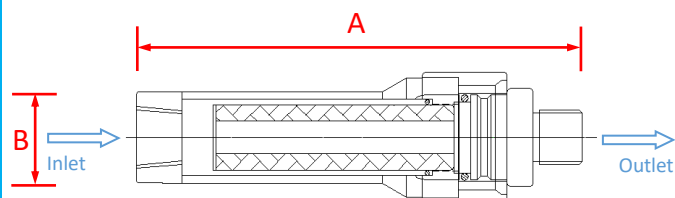
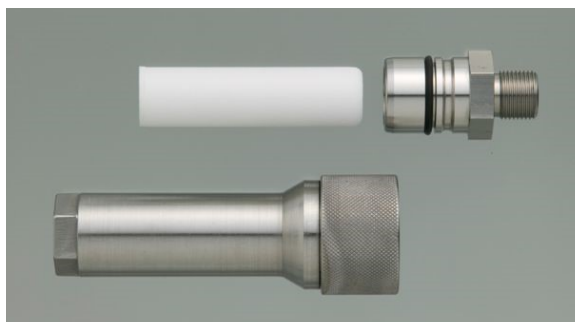
- The fiber-to-fiber bond at each contact point featuring integral rigid thermally bonded construction enables consistent filtration and eliminates pore size variability and media migration.
- A rigid filter structure of fused self bonding fibers in a three dimensional network with a high tolerance for differential pressure is achieved.
- The diameter of the structural fibers is changed for every grade, and the grades are clearly differentiated from a nominal filtration size of 5µm to 185µm.

Application

General Industry :Splay gun Paint
Chemicals : Paint, Ink, etc.
Electronics : Optical films, PCB, FPC, etc.

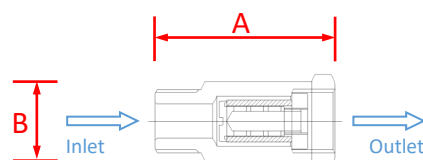
Filter Rating			
For JM Housing		For M-20 Housing	
Grade	Nominal rating	Grade	Nominal rating
CPS-BR-1005	5 µm		
CPS-BR-1010	10 µm	CPS-0810	10 µm
CPS-BR-1025	25 µm	CPS-0825	25 µm
CPS-BR-1050	50 µm	CPS-0850	50 µm
CPS-BR-1075	75 µm	CPS-0875	75 µm
CPS-BR-10100	100 µm	CPS-08100	100 µm
CPS-BR-10150	150 µm	CPS-08150	150 µm
CPS-BR-10185	185 µm	CPS-08185	185 µm

JM for Small Volume



Dimension A	137 mm
Dimension B	28 mm
Weight	0.6 kg
Body Material	SUS304
Sealing Material	Perfluoro Polyether
Inlet	Rc3/8" Female
Outlet	G3/8" Male

M-20 for Minimum Volume



Dimension A	47 mm
Dimension B	21 mm
Weight	30 g
Body Material	Aluminum, Brass
Sealing Material	Fluoro Polymer
Inlet	Rc3/8" or Rc1/4" Male
Outlet	Rc3/8" Female

Ordering Guide

Code information					Sales Unit
Grade		Filter Rating	ID & OD (mm)	Length (mm)	SPQ (pcs/ctn)
CPS -	(Housing JM) BR-10	05 (5 μm) 10 (10 μm) 25 (25 μm) 50 (50 μm) 75 (75 μm) 100 (100 μm) 150 (150 μm) 185 (185 μm)	10 - 20 -	74	50
	(Housing M-20) 08	10 (10 μm) 25 (25 μm) 50 (50 μm) 75 (75 μm) 100 (100 μm) 150 (150 μm) 185 (185 μm)	08 - 11 -	17	100
Example : CPS-BR1010 10-20-74 (SPQ 50pcs)					
CPS -	BR-10	10	10-20-	74	50

* Description of each characteristic data is based on our original test methods. The actual data may differ slightly from the data shown here by use conditions.

* Please be reminded that we may change this content without advance notice.

* Copyright JNC Filter Co., Ltd. All rights reserved. No reproduction or republication without written permission.



JNC Filter Co., Ltd.

Headquarters and Osaka Sales Office
Tokyo Sales Office
Nagoya Sales Office
web : <http://www.jnc-corp.co.jp/filter/>

Tel : +81-6-6441-3257 Fax : +81-6-6441-8836
Tel : +81-3-3243-6222 Fax : +81-3-3243-6223
Tel : +81-52-583-6007
Email : jft.exp@jnc-corp.co.jp

3-3-23, Nakanoshima, Kita-ku, Osaka 530-6108
2-2-1, Otemachi, Chiyoda-ku, Tokyo 100-8105
4-4-10, Meieki, Nakamura-ku, Nagoya 450-8561



2018.02.0000